

해상훈련해역(1/2)

<훈련해역>

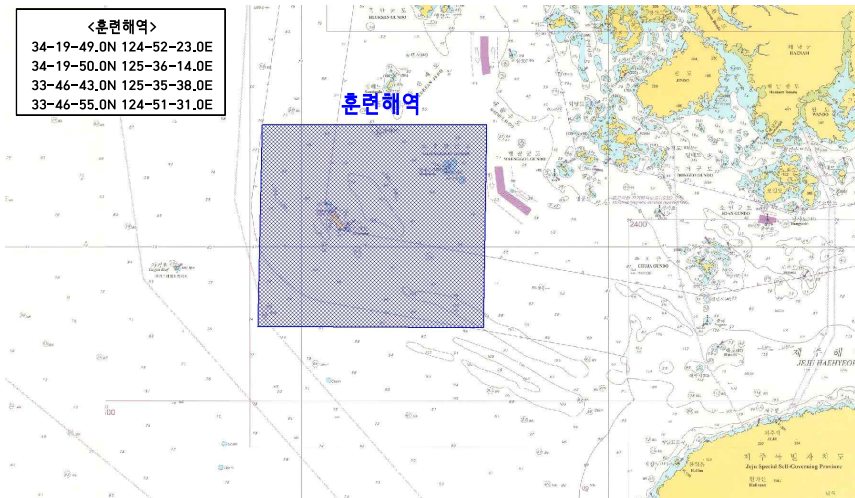
34-19-49.0N 124-52-23.0E

34-19-50.0N 125-36-14.0E

33-46-43.0N 125-35-38.0E

33-46-55.0N 124-51-31.0E

훈련해역



해상훈련해역(2/2)

<훈련해역>

34-48-12.4N 128-46-59.8E

(반경 1NM)

